

## Stormwater Pollution

The storm drains that keep our parking lots, streets and businesses from flooding lead to the Los Angeles River.

Stormwater runoff enters the storm drain system through grates and curb inlets called catch basins. Unlike water that enters the sanitary sewer system, water that enters the storm drain system travels, untreated, directly to the Los Angeles River, carrying with it pollutants that the stormwater contacted.

Pollutants such as trash, oil, grease, soap, animal waste and chemicals that are spilled onto the ground, poured into storm drains, stored outside or placed in the trash (even in a sealed container) can be washed down the storm drains by stormwater.

Stormwater Pollution can have financial consequences and adversely affect human health, marine life, and property values.

**It is your responsibility to manage your facility in a way that protects the quality of our waterways and marine resources.**

## Resources

To report illegal dumping in storm drains, clogged catch basins, hazardous waste spills, sewer back-ups, and water line breaks, call:

**(888) CLEAN-LA** (Los Angeles County)

or

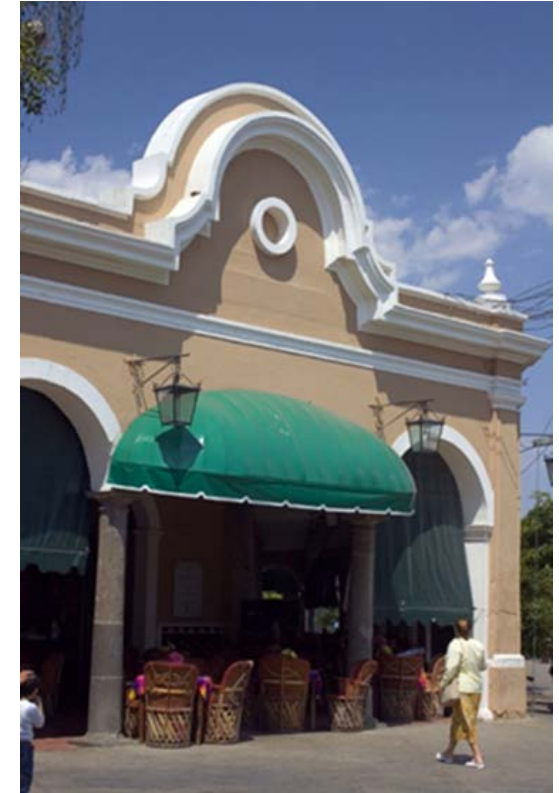
**(323) 722-4805** (City of Commerce).



If there is a storm drain inlet on your property (not in the public right-of-way), it is your responsibility to remove accumulated debris from the inlet and mark it with “no dumping, drains to ocean” or an equivalent statement.

# Stormwater Pollution Prevention

## Restaurants



**City of Commerce  
Environmental Services**  
(323) 722-4805



## Stormwater Regulations

The National Pollutant Discharge Elimination System (NPDES) permit program was created under the Clean Water Act to regulate pollutant discharges. There are three general stormwater permits: Municipal, Industrial and Construction.

The City of Commerce is a Permittee under the Los Angeles Municipal Separate Storm Sewer System (MS4) Permit. To comply with the Municipal Stormwater Permit, the City of Commerce must track, educate, inspect and ensure compliance with municipal ordinances at industrial and commercial businesses, which includes restaurants.

## Employee Training

Establish a training program to educate employees regularly on the following topics:

- How to “dry wipe” pots, pans, dishware, and work areas to remove grease before washing.
- How to properly dispose of food waste and solids to prevent leaking and odor.
- How to prevent and clean up spills, including training employees on the location and use of absorption materials.
- How to properly transfer grease and oil from cooking equipment into a grease collection receptacle without spilling.
- How to keep the parking lot, outside eating areas, and dumpster free of litter and debris using dry cleanup methods.
- How to eliminate non-stormwater discharges by washing kitchen mats indoors, disposing of mop water in the sanitary sewer and cleaning outdoor areas with dry cleanup methods.

## Non-Stormwater Discharges (NSWD)

NSWDs are discharges that do not originate from precipitation events. This includes discharges of air conditioner condensate, vehicle wash water, irrigation water, etc.

Employees should know that it is illegal to allow any discharge except stormwater to enter the storm drain system. Non-stormwater discharges should be contained and eliminated.



Illegal non-stormwater discharge from a facility using a hose to wash the sidewalk.

## Best Management Practices (BMPs)

BMPs are practices to prevent or reduce surface water pollution.

### *Proper Grease Disposal*

- Grease is stored in a closed collection receptacle that is disposed by a licensed hauler. Keep grease container sanitary.
- “No Grease” signs are posted at all drains and sinks to remind staff that no fats, oils, or grease is to be poured down the drain.
- Kitchen mats are washed indoors.
- Grease interceptor/trap is maintained.
- Kitchen exhaust hood is clean.

### *Trash Container Maintenance*

- Trash bins and dumpsters are kept closed.
- Leaking trash containers are replaced.
- When cleaning trash containers, sweep debris and scrub the container with a hard bristle brush and non-toxic soap, then rinse off the residue into a drain connected to the sanitary sewer system.

### *Outdoor Maintenance*

- Outdoor areas are free of litter and debris.
- Use dry cleanup methods (sweep) or high pressure, low volume spray. Prevent water from entering the storm drain.

### *Spill and Leak Cleanup*

- Keep absorbent materials on-site.
- Clean-up spills immediately. Dispose of materials properly.
- Dry ingredient spills should be swept or vacuumed.
- Fat, oil, or grease spills should be covered with absorbent material, and the absorbent material should be swept up and disposed in the garbage.
- Automotive fluids in the parking lot should be cleaned with absorbent materials and disposed of as hazardous waste.